



Solution Brief

# Connected oil & gas operations

Boost productivity and embed safety with connected technology solutions that tackle multiple business challenges



# Safer oil & gas operations

## **A smarter way to address operational challenges**

The challenge to maintain an efficient and competitive site operation has never been greater.

Market pressures such as inflation, fluctuating commodity prices, and the need for portfolio diversification are driving up costs. Limited access to skilled workers compromises efficiency and safety. Supply chain disruptions, geopolitical instability and cybersecurity threats further complicate operations. And the expectations around the social licence to operate are constantly evolving. Additionally, businesses may have accumulated disparate technologies to keep pace with compliance and manage growing network communications, compounding operational inefficiency. This is where the Motorola Solutions Connected Operations can help. An end-to-end solution to leverage technology into an integrated, optimised, scalable communications technology ecosystem that is primed to improve productivity and safety, and help reduce costs. With a portfolio of voice, video, AI and analytics, software, network, and cybersecurity solutions, the Motorola Solutions Connected Operations can power your site to greater efficiency.

Maximize operational efficiency even in remote and complex environments with secure, robust and reliable connected technology.



# A proactive path to digital transformation

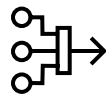
By leveraging technology solutions with **Connected Operations**, you can cost-effectively increase outputs, reduce risks and proactively manage workforce limitations to experience a truly competitive digital transformation.

**We can help solve your operational challenges and increase productivity by:**



## Mitigating safety and compliance issues

Real-time alerts from integrated technology help detect and prevent incidents before they happen, reducing downtime for a safer and more productive working environment.



## Reducing repetitive tasks and enhancing productivity

Integrated technology with advanced AI and analytics augments your workforce to enable better decision-making, higher-order opportunities, and the means to work safer.



## Unlocking the full potential of data with human-to-machine

Assimilating and managing information across multiple sources establishes more effective human-to-machine connections, giving your people actionable insights to focus efforts more constructively.



## Ensuring seamless communication and interaction

Aggregated technology connects your people and assets to effectively manage teams across different locations, networks and devices, even in remote and complex working environments.



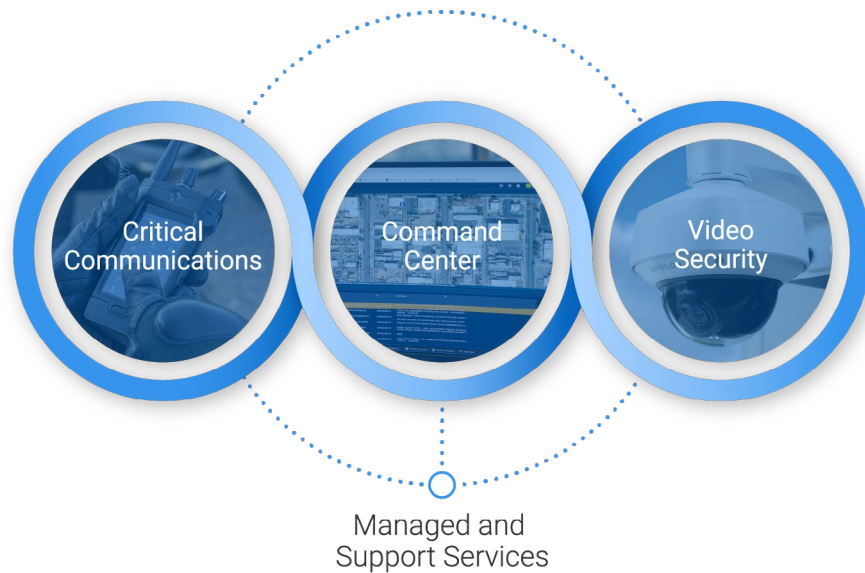
## Establishing comprehensive and secure network coverage

Protecting critical operations safeguards your entire enterprise across people, equipment, systems, and information to mitigate cyberattack and minimize downtime production risk.



# Capitalize on technology to put productivity first

Motorola Solutions' **Connected Operations** helps you build a lasting communications system by tackling usage gaps across various technologies. Our solutions apply existing technology more effectively and enable a more economical adoption of future technology.



## Critical communications

Flexible and scalable communications technology use new or existing devices to eliminate communication barriers. Our critical communication devices and networks are trusted around the world because they're engineered to perform in the harshest conditions and situations. From mission-critical radio to broadband push-to-talk, our technology helps you connect with confidence and clarity to achieve more and stay safer.

## Video Security

Video security systems, powered by responsibly-built AI, can alert you when action is needed and focus human attention where it matters most. With live video, powerful analytics, touchless access, and advanced alarm and identity management, our technology empowers you with 24/7 visibility, awareness and control so you can cover more ground and act with more certainty.

## Command Center

Command center solutions help ensure that critical information is at the ready to give you situational clarity to take action. Data from voice, video, applications and your facilities are unified to create a 360° informational view, simplifying workflows and providing the overarching perspective to make decisions with greater focus, accuracy and speed.

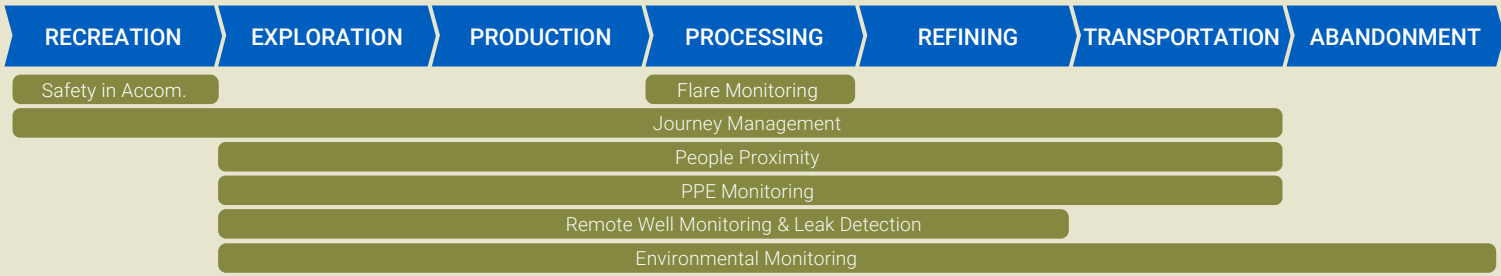
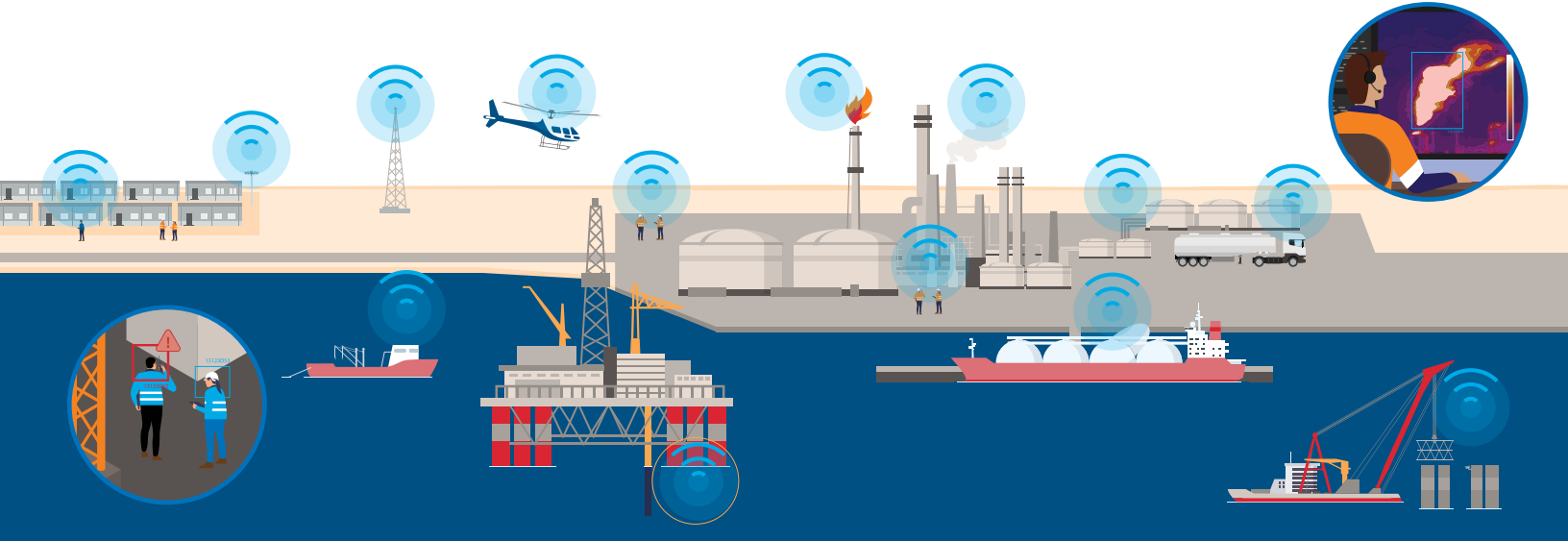
## Managed and Support Services

Managed and support services provide a proven, 'always-on' rigor to keeping your technology secure, optimized and current with innovative advancements. From device break-fix support to comprehensive 24/7 management to cybersecurity detection and defense, our team brings decades of experience to help ensure your ecosystem of technologies supports confident operational performance.



# Safer, more productive operations

Discover the potential of a powerful and customizable communications ecosystem to maximize productivity and safety across the whole value chain.





# Safer oil & gas operations

Businesses of any size in the Energy, Oil & Gas and Natural Resources sectors can cost-effectively leverage and integrate technologies with a **Connected Operations** solution. We're ready to help your operations meet productivity and safety challenges head on – now and into the future.

To learn more, visit:

[www.motorolasolutions.com](http://www.motorolasolutions.com)



Motorola Solutions, Inc. 500 West Monroe Street, Chicago, IL 60661 U.S.A. [motorolasolutions.com](http://motorolasolutions.com)

MOTOROLA, MOTO, MOTOROLA SOLUTIONS and the Stylized M Logo are trademarks or registered trademarks of Motorola Trademark Holdings, LLC and are used under license. All other trademarks are the property of their respective owners. ©2025 Motorola Solutions, Inc. All rights reserved. 01-2025 [BG03]