

# Flex subscription - Your optimal safety suite

## Build the CAD solution that is right for your agency

Every public safety agency deserves robust, dynamic, and cost-effective solutions, regardless of size. When every second matters, enabling your agency with those proper solutions is crucial. With the Flex subscription, you are able to connect teams, collaborate seamlessly, and improve response with intuitive workflows and efficient, effective incident management.

## How it works

With the Flex subscription, you can add on functionality as your agency grows and adapts, helping you to improve response and resolution in a way that also fits your agency's needs and budget. You can start taking advantage of cloud connected features right away, even while the rest of your on-premises deployment is under way. A hybrid approach allows your organization to experience the benefits of a mature, feature rich and tested public safety system while exploring the flexibility of the cloud. Improved features and functionality update automatically, creating a more convenient and effective process for your agency.

**Maximized for today and flexible enough to meet your community's ever-changing needs for tomorrow and beyond.**

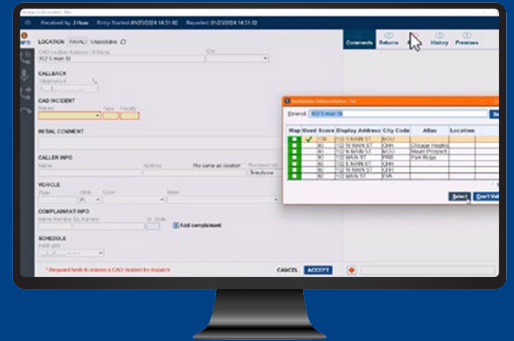
## Benefits

- Maximized value
- Simplified buying process
- Predictable spending
- Quicker implementation of cloud functionality
- Automatic updates to cloud functionality
- Protection from cyber threats



Motorola Solutions, Inc. 500 West Monroe Street, Chicago, IL 60661 U.S.A.

MOTOROLA, MOTO, MOTOROLA SOLUTIONS and the Stylized M Logo are trademarks or registered trademarks of Motorola Trademark Holdings, LLC and are used under license. All other trademarks are the property of their respective owners. ©2024 Motorola Solutions, Inc. All rights reserved. 12-2024 [DB01]



## Standard Flex subscription features

- 20+ core modules for CAD, Mobile and Records.
- Single sign-on
- Cloud-based CAD extension
- Multi-agency search
- Internal alerting for PSAPs
- Inter-agency CAD data sharing
- Proximity alerting
- Automated intelligent workflows
- Private premises information access
- Map and event monitor for situational awareness
- Endpoint security customized and tested for Flex with 24/7 monitoring from our SOC team to help protect against common malware