



# EVERY DEVICE, EVERY NETWORK, EVERY TEAM, CONNECTED LIKE NEVER BEFORE



**Business-critical communications are changing for the better. Now mobile workers can collaborate with others beyond two-way radio networks from any location, on any device. Access is secure, ubiquitous and affordable, so organizations can maximize the value of their existing investments while leveraging the capabilities of the latest broadband technologies. The future of workforce communications is more than better equipment. It's equipping those who work in the field and office differently.**

The reality is, corporate infrastructure and IT spending is constantly under pressure as companies seek to leverage their existing IT investments to spend less and achieve more. Executives and operations leaders say they want more collaboration within their organizations by simplifying communications processes, but simply don't have the necessary capabilities or budget to deploy new systems.

According to the 2015 Motorola Manufacturing Survey, there is a growing need to connect two-way radios to other devices, with almost 60 percent of respondents saying this is important. Over 50 percent want to connect radios to tablets and laptops; 92 percent want to connect radios to smartphones, a sizeable increase from 61 percent in last year's survey.

## CONNECTING EVERYONE ON ANY DEVICE AND NETWORK, AFFORDABLY

What companies are discovering is a powerful, proven way to connect their people, in the field or in the office, so they can share information securely, reliably and in real-time – no matter the network, carrier or device. From two-way radios to smartphones, laptops to landlines, tablets to rugged handhelds, they can use the devices they already have and the networks they already subscribe to and talk to their mobile workers and support personnel outside their current communication system.



**ALMOST 60%**  
OF MANUFACTURERS SEE  
CONNECTING TWO-WAY RADIOS TO  
OTHER DEVICES AS IMPORTANT<sup>1</sup>

**OVER 50%**  
WANT TO CONNECT RADIOS TO  
TABLETS AND LAPTOPS<sup>1</sup>

**92%**  
WANT TO CONNECT RADIOS TO  
SMARTPHONES<sup>1</sup>

## WHITE PAPER

### WAVE WORK GROUP COMMUNICATIONS

Wherever their workforce is, whatever they do, WAVE Work Group Communications lets them connect with simple, secure, affordable push-to-talk (PTT). The software is so effective, it has been deployed by government agencies, the military (including special operations forces), public safety agencies and commercial companies of all sizes around the world for more than ten years.

Developed specifically to improve communications between individuals and teams using different equipment, WAVE Work Group Communications enables seamless, real-time interoperability between disparate radio systems for enhanced collaboration and situational awareness. Just like radio networks, security is iron-tight, voice is encrypted, and like the underlying network, WAVE provides the reliability and robustness businesses need.

## SAFETY IS WHAT YOU CAN'T SEE. EXPERTISE IS WHAT YOU CAN'T OVERLOOK.

How can your organization make the most of technology? Look to a globally-trusted partner to navigate the process with you, from mobilizing devices to managing networks. For nearly 90 years, Motorola Solutions has listened, learned and innovated with companies worldwide. We know how to fully integrate their next generation solutions and services because we have worked with them, side by side, to serve their business-critical communication needs.

With our world-recognized two-way radio systems and game-changing networks like LTE, we can unify communications, increase collaboration, improve efficiency and make the workplace a safer place for everyone.



### PRODUCTION SUPERVISOR

Working from his office, he can access production line radio communications with a smartphone or from his desktop PC when needed.



### UTILITY WORKER

A recent ice storm has felled trees and blocked access to a critical sub-station. He uses his company radio to communicate with road crews on a different radio system.



### FLEET MANAGER

Moving from depot to depot, he can use his own smartphone to connect with fleet-wide radio communications and stay informed throughout the day.



### WAREHOUSE MANAGER

He doesn't want a radio on his desk for the few times he needs it. Instead he uses his smartphone, tablet or desktop PC to communicate with shift teams from any location.

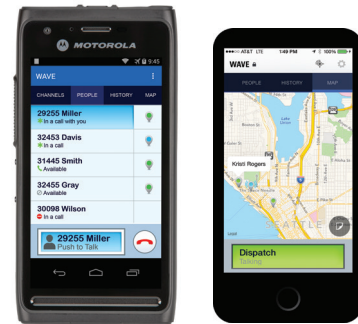
## IMPROVING EVERYDAY EFFICIENCY WITH EVERYWHERE CONNECTIVITY

When commercial companies extend the reach of mobile workforce communications beyond the radio system, they can seamlessly connect to broadband networks and other radio systems. They give those who can't or don't carry a radio, but need to access their system, a choice. From the production supervisor in PTT communications talking to a warehouse parts manager to the utility lineman collaborating with a road crew after an ice storm. They increase efficiency and safety by ensuring that those without radios can collaborate with secure PTT communications.

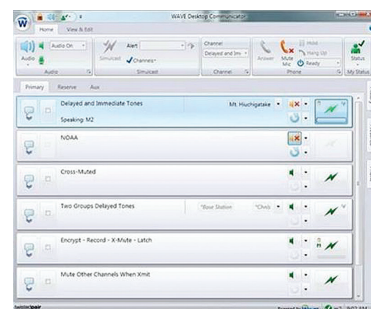
For more information on how Motorola is helping companies work better, smarter and faster through next generation technology, visit [motorolasolutions.com/wave](http://motorolasolutions.com/wave).

Motorola Solutions, Inc. 1301 E. Algonquin Road, Schaumburg, Illinois 60196 U.S.A. 800-367-2346 [motorolasolutions.com](http://motorolasolutions.com)

MOTOROLA, MOTO, MOTOROLA SOLUTIONS and the Stylized M Logo are trademarks or registered trademarks of Motorola Trademark Holdings, LLC and are used under license. All other trademarks are the property of their respective owners. © 2015 Motorola Solutions, Inc. All rights reserved. GO-21-218



WAVE Mobile Communicator turns ruggedized custom handhelds and consumer-grade smartphones into secure, multi-channel PTT devices.



The WAVE Desktop Communicator turns an industry-standard Windows PC into a PTT console with pre-configured channels, a dial pad, presence/mapping and texting capabilities.

### SOURCES

1. 2015 Motorola Solutions Manufacturing Industry Survey